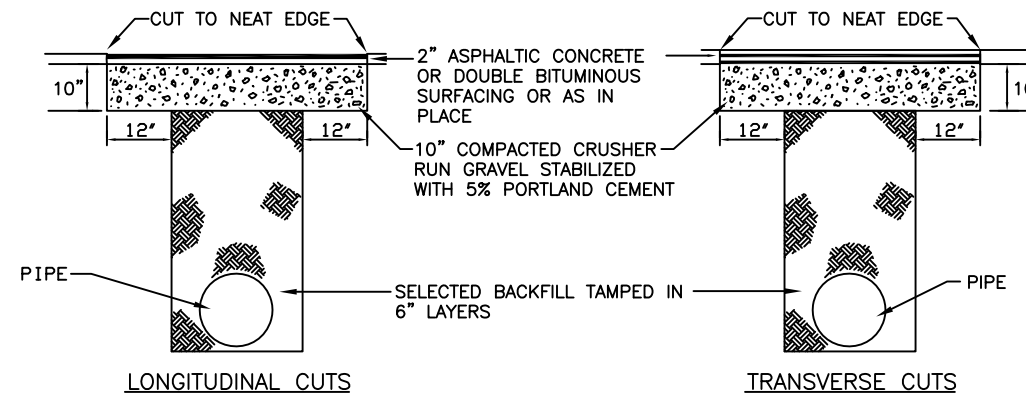
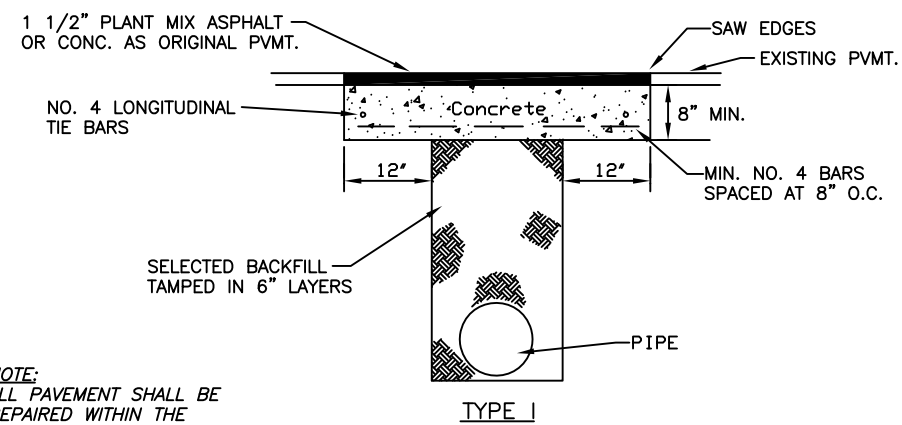


Notes

1. PAVEMENT DETAIL NOTES:
- THE NORTH CAROLINA DEPARTMENT OF TRANSPORTATION POLICIES AND PROCEDURES MANUAL FOR ACCOMMODATING UTILITIES ON HIGHWAY RIGHT-OF-WAYS LATEST SPECIAL PROVISION FOR DIRECTIONAL DRILLING METHODS PROVIDES THAT DIRECTIONAL BORING IS APPROVED AT MINIMUM DEPTH AND CLEARANCES LISTED BELOW:
- TEN (10') FEET UNDER PAVEMENT SURFACE
  - FIFTEEN (15') FEET BELOW THE PAVEMENT SURFACE OF CONTROLLED ACCESS ROADS
  - FIVE (5') FEET BELOW THE DITCH LINE
  - THREE (3') FEET COVER ON ANY PARALLEL INSTALLATION
  - TEN (10') FEET CLEARANCE FROM CLOSEST POINT OF ANY STRUCTURES SUCH AS: BRIDGE FOOTINGS, PILINGS, STORM DRAINS, ETC.
- OVERBORES SHALL NOT BE MORE THAN TWO (2") INCHES GREATER THAN THE DIAMETER OF THE PIPE OR ENCASEMENT.



STATE - SECONDARY HIGHWAYS



NOTE:  
ALL PAVEMENT SHALL BE REPAIRED WITHIN THE SAME WEEK IT IS CUT

PRIMARY HIGHWAYS ONLY

DETAILS FOR CUTTING AND REPAIRING PAVEMENT "E1"

THIS DRAWING IS FOR PREVIEWING THE PROJECT VIA THE INTERNET. OBTAIN SEALED DRAWINGS FOR BIDDING PURPOSES.



HEATH AND ASSOCIATES, INC.  
108 W. WARREN ST., SUITE 300  
SHELBY, NORTH CAROLINA 28150

Issued For: XX  
Engineer: XX  
Environmental Services By: XX

Revisions			
REV. #	Description	Date	By
01	DETAILS	07-28-01	TPC
		-/-/-	
		-/-/-	

SHEET DESCRIPTION  
CROSSINGS AND PAVEMENT DETAILS

DETAILS 02